



PADI Altitude Diver Course

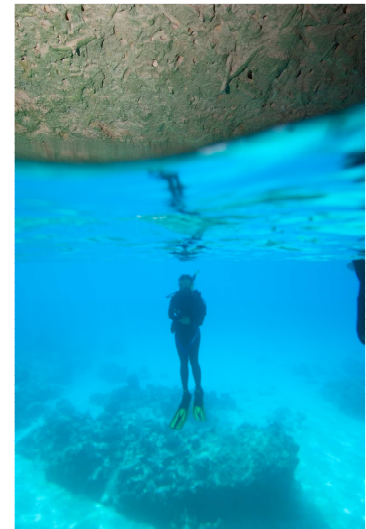
Any time you're diving at 300 to 3000 metres/1000 to 10,000 feet above sea level, you're altitude diving. If you want to explore the hidden world of a mountain lake, such as diving the remains of the old town that lies submerged under Lake Jindabyne. The this PADI Altitude Diver Specialty course is for you.

The Fun Part

Dive more challenging dive sites while you satisfy your curiosity for "I wonder what's down there?" The fun part about altitude diving is that you can explore places many people have never seen.

What You Learn

- You'll learn the effects of pressure at higher altitudes and how to adjust your dive plan accordingly. Whether you use a recreational dive planner table (RDP™), an electronic eRDP™ or a [dive computer](#)
- How plan and make a dive at high altitudes.
- Altitude dive planning, organization, procedures, techniques, problems and hazards
- Recreational Dive Planner™ procedures for diving at altitude
- Safety stops and emergency decompression procedures at altitude



Prerequisites

- Must be a [PADI Open Water Diver](#) or Junior Open Water Diver (or qualifying certification from another organisation)



"So much ocean, So little time"

**103 Pacific Hwy,
Charlestown NSW 2290
Ph: 02 4942 1412 Fax: 02 4942 3997
info@charlestowndive.com.au**