



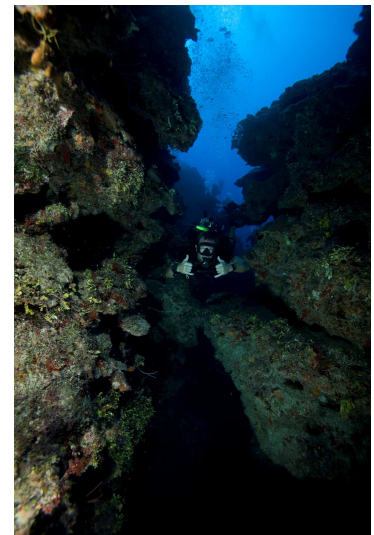
PADI Cavern Diver Course

Can you see the light? If you dive within the light zone of a cave—the area near the cave entrance where natural light is always visible—you're in the cavern zone.

The fun part is exploring secrets hidden in caverns around the world and having the knowledge and skills to do it correctly.

What You Learn

- This is a challenging and very exciting course that includes four training dives over at least two days. During your first open water dive you'll practice line handling, reel use and emergency procedures without entering a cavern. But, for your next three dives, you're headed into the cavern, staying within the light zone and 40 metres/130 feet total distance from the surface. You learn about
- Cavern navigation and line protocols
- Planning, organization, techniques, problems and hazards of cavern diving
- Special equipment use, such as lights, guidelines, reels and redundant breathing systems
- Air sharing, disorientation, silting, line problems and other emergency procedures specific to cavern diving
- Silt prevention, buoyancy control, air management and emergency procedures
- Depth and distant limits for cavern diving



Prerequisites

- You must be
- A PADI Advanced Open Water
- At least 18 years old

You may also be interested in the CDAA Cave courses, see Charlestown Dive Staff for more information.



"So much ocean, So little time"

**103 Pacific Hwy,
Charlestown NSW 2290
Ph: 02 4942 1412 Fax: 02 4942 3997
info@charlestowndive.com.au**